

# EPSON®

**How to Use Mac OS X Printer Drivers with the  
EPSON Stylus Pro® 7600 and 9600 UltraChrome™ Printers**

EPSON America, Inc. © 2003, Version 050903MR

## Contents

- 3**    **Forward**
- 4**    **Mac OS X Driver Installation**
- 8**    **Printing with Mac OS X: An ICC Workflow**
- 15**   **Tips and Troubleshooting**

## Forward

This document is to help assist anyone using the latest Mac OS X drivers from Epson for the EPSON Stylus Pro 7600 or 9600 UltraChrome printers.

There are two different types of Macintosh users - Pre OS X and OS X only.

For Pre OS X users, one of the biggest problems facing Mac OS X printing is that everything is new. Once you get over the fact the Chooser is gone, you're left with something that must be understood all over again. It's a dramatic change over the previous Chooser concept.

For users who started their Macintosh experience using only OS X, they are left with understanding the basic concepts of adding a printer driver to OS X, configuring it properly, and printing through their applications. Their experience will be significantly different than people who were used to the previous Apple Chooser concept.

Mac OS X is completely new. Everything about its printing technology is completely new. Apple and its partners have worked hard to create the printing workflow behind this powerful new operating system. Remember, OS 9 had many years of development behind it.

Being a Mac user since the beginning, I can assure you Mac OS X will be worth the effort to learn. You will not switch back to OS 9 once you've perfected your printing workflow under Mac OS X.

The Macintosh has always been known for its ease-of-printing. With this document, I hope you'll agree this will always be the case. Goodbye OS 9 and hello OS X...

Mark Radogna  
*Senior Manager, Professional Graphics*  
EPSON America, Inc.

## Mac OS X Driver Installation

### STEP 1: Run the Driver Installer Package



Installing Mac OS X drivers are very straightforward. After downloading the proper driver for your printer model, simply double-click the installer package and follow the on screen instructions.

Your Macintosh may need to be restarted after installation has completed.

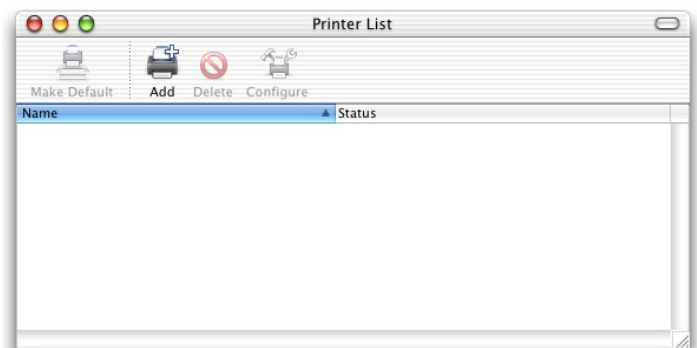
For the latest Mac OS X drivers, visit <http://prographics.epson.com>

### STEP 2: Connect Your Printer and Get it Ready

In order for you to 'add' your printer for use within Mac OS X, you must have your printer connected to your Macintosh the way you intend to use it everyday. Make sure to turn-on your printer and ensure it's in a ready mode. Ready mode means no printer errors exist and the printer is loaded with ink and media and in a ready state for printing. Make sure no red lights exist on the printer's front control panel.

### STEP 3: Launch the Apple Print Center Utility

The beloved 'Chooser' is gone. It has been replaced by the 'Printer Center' utility. It is available in the following location; Applications / Utilities / Print Center

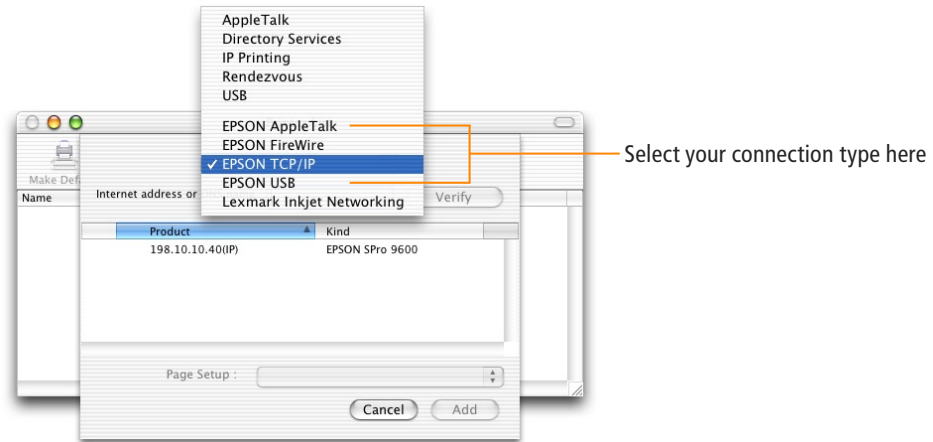


Select the Print Center Utility icon and drag it into the Dock. Now you will have quick access to it whenever you need to deal with your printers.

Caution for OS 9 Users: Do not be tempted to move your Utilities folder out of your Applications folder. By doing so, future OS X upgrades may not be properly installed. Use your Dock or make an alias of the Utilities folder instead.

#### STEP 4: Selecting Your Printer Connection

Select the 'Add' icon at the top of the Printer List window. Next, pull down the top menu and select the proper connection you are trying to use for your Epson printer.



Depending upon your Epson printer model, you may be able to connect to Mac OS X via USB, AppleTalk, TCP/IP, or FireWire.

You must only select an Epson printer connection by using one of the Epson interface choices. For example, if you are connecting your Epson printer via USB, then select 'EPSON USB' from this pull down menu, not 'USB'. This is also true for all other connection types.



If using an Epson internal 10/100 BaseT Ethernet card, select and configure your printer via 'EPSON TCP/IP' rather than 'EPSON AppleTalk'. TCP/IP is more reliable and a faster connection than AppleTalk. TCP/IP will become your new best friend under Mac OS X.

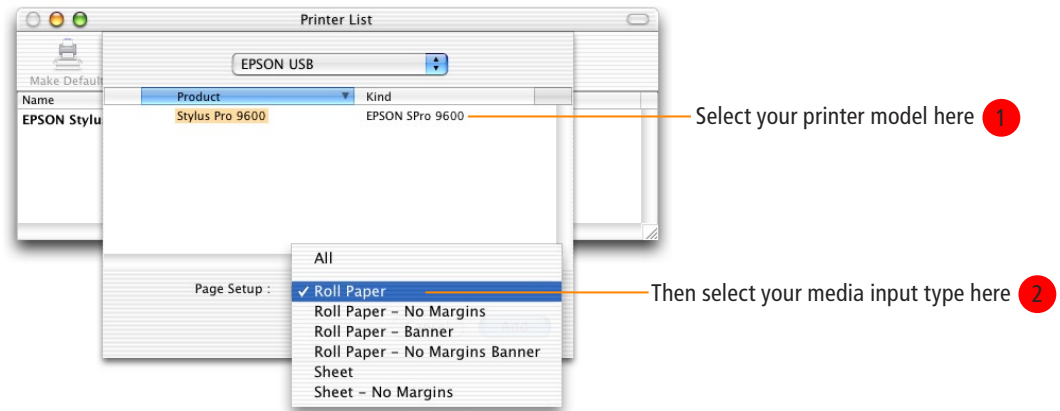
Configuring your Epson printer to work under TCP/IP is easy. Simply make sure your TCP/IP address for both the printer and your Macintosh are within the same domain. For example, if your Mac's TCP/IP address is 198.10.10.5, then configure your Epson Ethernet card's TCP/IP address to something like 198.10.10.6. If you are unsure about this setting, ask your IT manager for help.

You can verify the TCP/IP address of your Epson Ethernet card by pressing the little black button on the back of the card. Hold it down until the printer starts to make some noise. A series of status sheets will be printed. Locate the TCP/IP number on one of these sheets and set your Mac's TCP/IP address to be within this same domain. Now you can run your web browser and type the Epson Ethernet card's TCP/IP address in the URL line to get access to the Ethernet cards configuration manager.

You can also use the EpsonNet MacAssist Utility under OS 9 to configure your Epson Ethernet card. See the documentation that came with your Epson Ethernet card for more details.

### STEP 5: Adding Your Printer Driver to the Print Center Utility

After selecting the connection type from step 4, the Epson printer should be showing up under the 'Product' and 'Kind' columns.



- 1 Select your Epson printer model and if supported, select the appropriate media input type from the 'Page Setup' pull down menu at the bottom of the Printer List dialog box.
- 2 The 'Page Setup' menu allows you to add all or specifically the media input types you plan on using with your Epson printer. For example, if you only plan on using roll based media types, then select the 'Roll Paper' menu choice before selecting 'Add'. You may add whatever combination of media types you intend to use with your printer at any time by returning to this screen.



The most common two drivers to add to your Printer List for either the SP7600 or SP9600 are 'Roll Paper' for any media that comes in roll form and 'Sheet', for any cut-sheet media being used.

After selecting the correct media input type from the 'Page Setup' pull down menu, click on the 'Add' button to return to the Printer List window. Repeat this step to add more media input types.

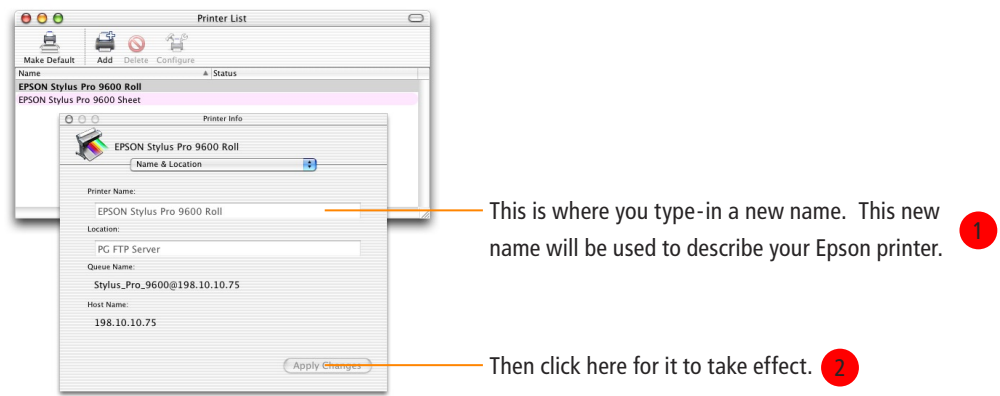
#### Pre OS X User Question: Why must I install drivers in this way?

The current Epson drivers for Mac OS X do not handle multiple media margins within a single printer driver. Therefore, in order to maximize your media margins, Epson needed to create multiple drivers to handle each media input type. Epson is working closely with Apple to resolve this issue within future Mac OS X and Epson driver releases.

## STEP 6: Naming Your Printer Driver and Deciding to Share It with Others

Once you've successfully added your printer driver and it's showing up within the Printer List window, you may want to rename it to better identify it later.

To rename your printer driver, simply select the printer device within the Printer List window and hit command-I or select 'Show Info' from the 'Printers' pull down menu.

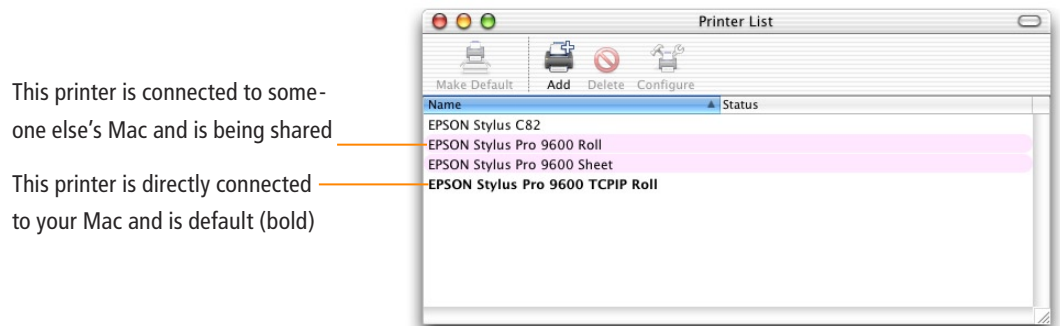


Type in the name you want and click the 'Apply Changes' button, then close the window.

Next, if you wish to share this printer with other Mac OS X users on the same network, you must turn-on 'Printer Sharing' within the 'Sharing' 'System Preferences' dialog.

By turning-on this feature, your Macintosh will be telling the network that you have an Epson printer to share with others. If another Mac OS X user has 'Show printers connected to other computers' checked within their "Preferences..." menu within their Print Center Utility, your printer will show up in their Printer List automatically.

Shared printers will be highlighted within the Printer List versus directly connected printer.



Congratulations, you've just added a printer driver to your Mac OS X system. Now any application will be able to print to this device.

# Printing with Mac OS X: An ICC Workflow

## STEP 1: Installing Your RGB ICC Profiles

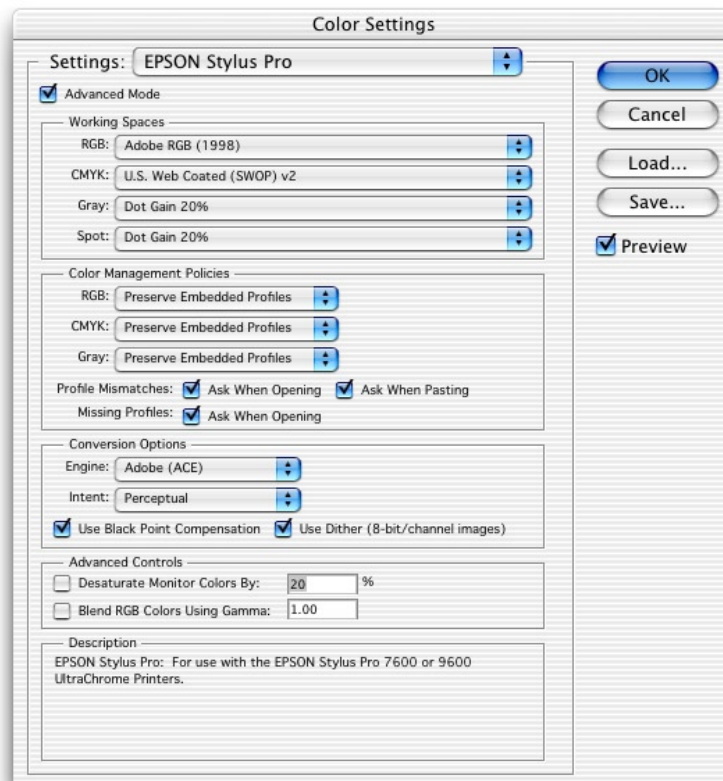
In order to use any RGB ICC profile for your EPSON Stylus Pro 7600 or 9600 printer under Mac OS X, you need to first place them within the standard place for profiles. Under Mac OS 10.2.6 or higher, place your ICC profiles here:

/Library/ColorSync/Profiles

To obtain high-quality ICC profiles directly from Epson, go to <http://prographics.epson.com>

## STEP 2: Configuring Adobe Photoshop 7

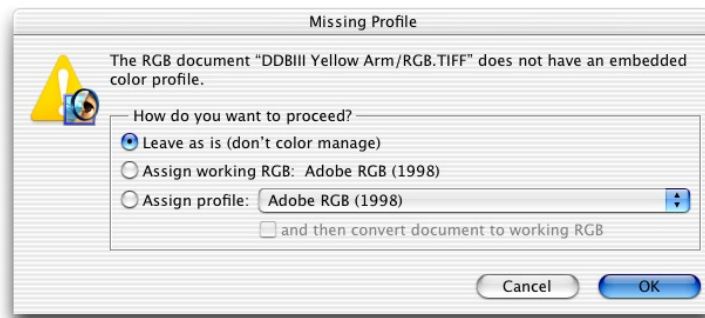
Launch Adobe Photoshop 7 and choose 'Color Settings...' under the 'Edit' menu. Setup the dialog box to look like this and hit 'OK'.



Depending upon who you talk to, this dialog box is very controversial. For the majority of professional photographic work, I feel this setup works best. Feel free to experiment based upon this basic setting. Be sure to always turn-on 'Black Point Compensation' and 'Use Dither'.

### STEP 3: Opening Your Image File

Next, open your image file and choose the proper conversion option if asked. If your file already contains a profile that matches the color settings you've setup in step 2 or if your image file is in LAB space, then the image will open right up. If not, then Photoshop will display a dialog similar to this:



In order to open your image file properly, you should NOT convert your data file. Instead, select 'Leave as is (don't color manage)'. The less color conversions you perform on your data file before printing the better.

Whenever you ask Photoshop to convert color using this dialog box, you will be modifying your image file forever. Depending upon how you created your image file, you may be limiting the quality of the actual image!

However, if you know what your doing, then select 'Assign working RGB: Adobe RGB (1998)' or assign a different profile using the 'Assign profile:' radio button.

Photoshop will then perform any color conversions and open your file into a window.



NIKON D1X & D1H



Professional digital camera owners, I highly recommend the use of Adobe's new Camera RAW plug-in. By shooting your work within your camera's RAW file format and using this new plug-in to open it within Photoshop, you will have an incredible amount of control over the quality and final printed size of the shot.



NIKON D100

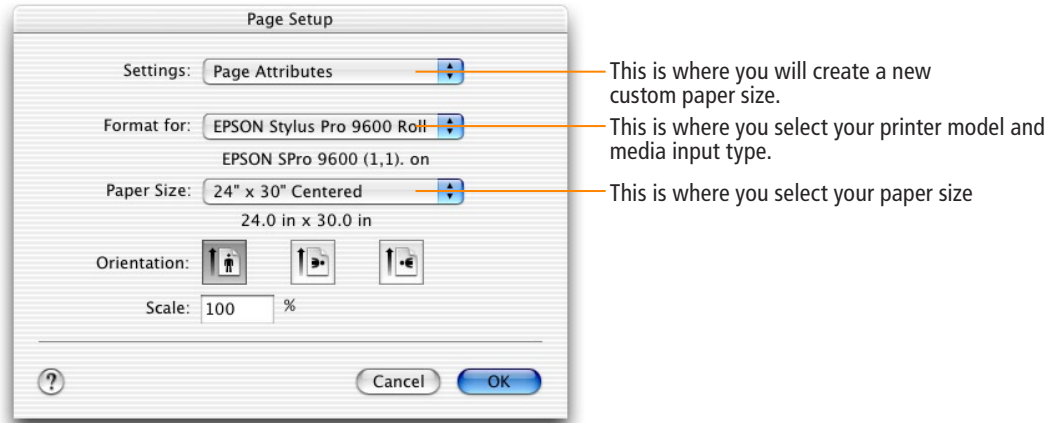
For the money (~\$99), the technology within this plug-in makes it a must buy. For EPSON Stylus Pro 7600 and 9600 owners, this plug-in will also generate a larger data file from your smaller original shot that will blow you away. Visit <http://www.adobe.com> for more details.

### What Color Space Should I Calibrate My Monitor To?

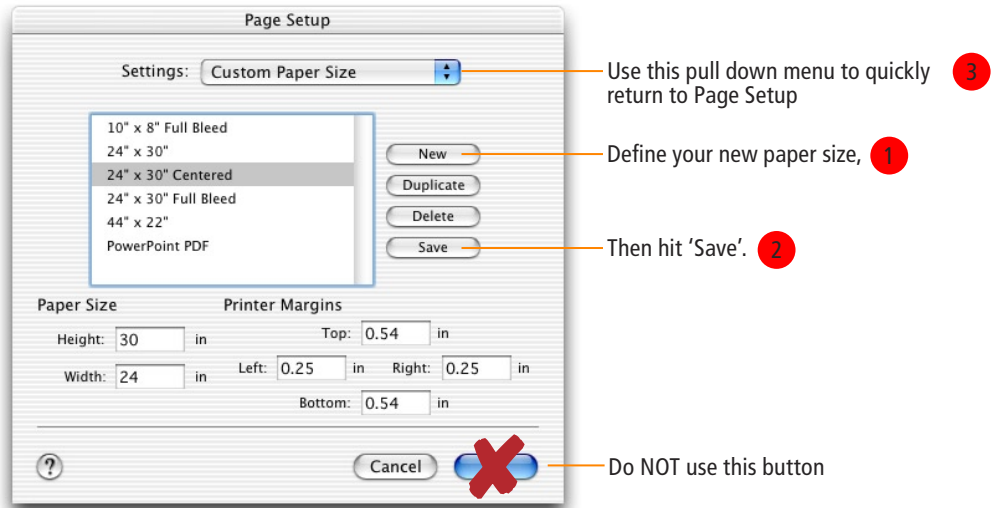
The answer to this question will vary, but if your using the latest LCD monitors from Apple then calibrate your monitors to a 2.2 gamma at 6500 degrees Kelvin. If you are using a CRT monitor I would recommend the same, but you might want to try using a gamma of 1.8 at 5000 degrees Kelvin, especially if your a graphic design or pre-press user.

**STEP 4: Defining Your Page Setup**

Next, choose ‘Print with Preview...’ from the ‘File’ menu. Notice the document dimensions, then click the ‘Page Setup...’ button. The following dialog will appear.



If you need to create a new paper size that better optimizes your media use, select ‘Custom Paper Size’ from the ‘Settings:’ pull down menu. The following dialog will appear.



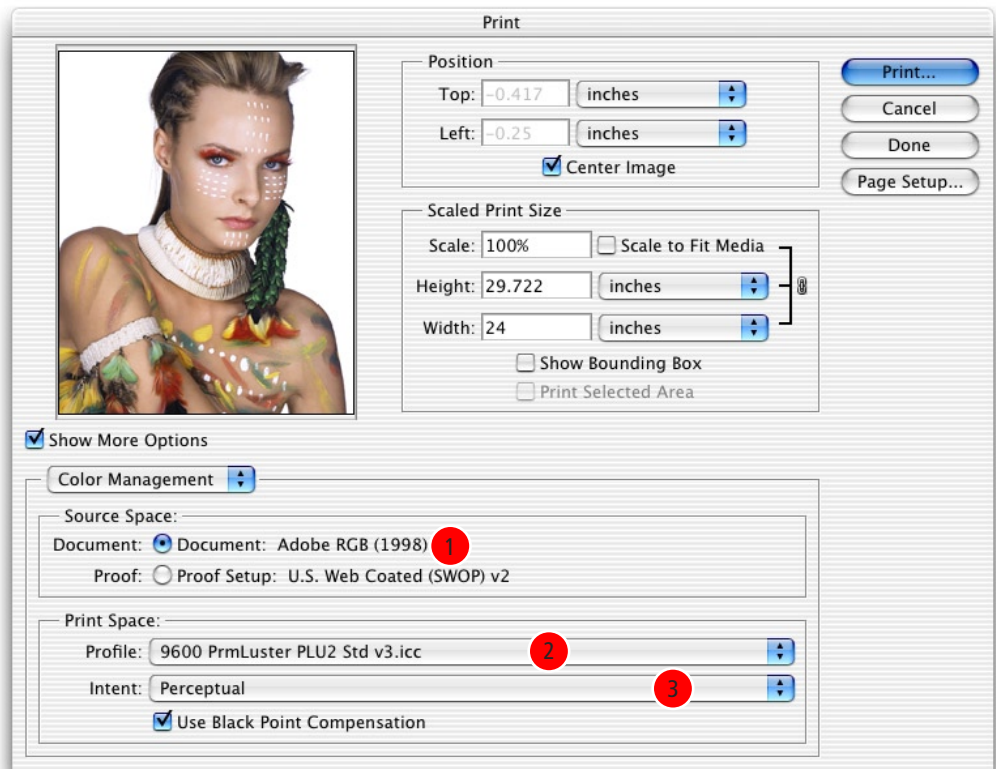
This dialog box will be redesigned within future Mac OS X releases, but for now, define your paper size and margins and hit the ‘Save’ button. To go directly back to the ‘Page Setup’ dialog select ‘Page Attributes’ within the ‘Settings:’ pull down menu. (clicking on the ‘OK’ button will waste time)



Notice how I made the top and bottom margins the same. This will guarantee the image will be printed perfectly centered on my sheet of paper.

### STEP 5: Selecting Your ICC Profile and Rendering Intent

From the Photoshop 7 'Print with Preview' dialog box select the 'Show More Options' check box, and choose 'Color Management' from the pull down menu. Your dialog box should look something like this:



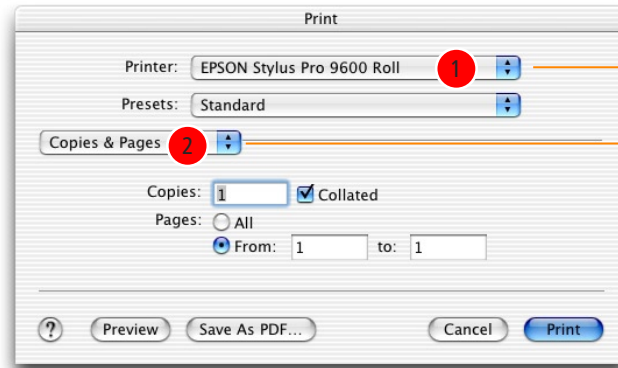
- 1 Under 'Source Space:' the 'Document:' radio button should be selected. You may see a different RGB profile tagged for your image file versus the example 'Adobe RGB (1998)' above. It may say 'Lab Color' or even 'ColorMatch RGB'. If it says 'Untagged RGB', then Photoshop will apply the default RGB working space profile that you defined in step 1 - which was 'Adobe RGB (1998)'.
- 2 Under 'Print Space:' the 'Profile:' selection should be set to an RGB ICC printer profile designed specifically for your combination of printer model, paper, ink, and driver setup.
- 3 Under 'Print Space:' the 'Intent:' selection should be set to either Perceptual or Relative Colorimetric depending upon your image file. I prefer the Perceptual rendering intent for everything - color and black and white. However, sometimes I use Relative Colorimetric for my black and whites or color prints that I know fall within the gamut of the printer. Try both intents to see what you like.



Always turn-on 'Use Black Point Compensation'. Perceptual will always override it, but Relative Colorimetric almost always requires it. So turn it on and forget about it!

### STEP 6: Choosing Your Printer Driver Settings & Printing Your Image

Take note of the ‘Print Space Profile’ selection within the ‘Print with Preview’ dialog box then click the ‘Print...’ button. The following dialog box will appear.



Select the same printer model and media input type you made in Step 4

Select each of the menu choices here to setup your printer driver’s various features - when done, create a Preset!

The Apple ‘Print’ dialog looks very similar to the standard Apple LaserWriter or AdobePS PostScript drivers under OS 9. With the introduction of Mac OS X, Apple has ‘re-set’ the look and feel for all printer manufacturer’s to follow. Epson has tried to implement our driver technology from Mac OS 9 to X, while keeping the Apple interface guidelines intact. As a result, Pre OS X users might find this driver a little ‘weird’, while new OS X users will find it quite easy to use.

- 1 First, make sure you select the printer model and media input type that you also selected in step 4.
- 2 Using this pull down menu, you must navigate through the various driver features. Once you’ve selected all your driver settings, you can create a preset by pulling down the ‘Presets:’ menu to save your settings.

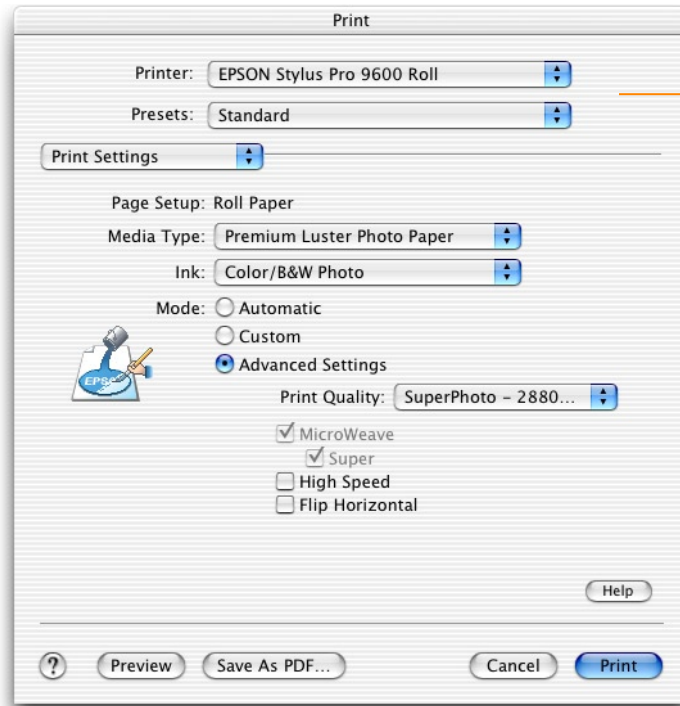


Many Epson users like to go through their selections over-and-over to be sure they are correct before printing. This process sometimes causes the driver to ‘reset’ all your settings back to a default mode, forcing you to re-do all your driver settings. This can be very frustrating.

The best advice I can give is to go through the driver settings from top-to-bottom. When done, immediately create a preset for future use. Do NOT be tempted to click on or ‘flash’ the ‘Presets:’ pull down menu after selecting all your driver settings. Doing so will reset the entire driver!

**STEP 6: Choosing Your Printer Driver Settings & Printing Your Image**

Pull down the driver features menu and select ‘Print Settings’. The following dialog box appears.



This Print Settings dialog is setup for an RGB ICC profile that was created for an EPSON Stylus Pro 9600 using Roll based Premium Luster Photo Paper, printing in color or black & white at 2,880 dpi.

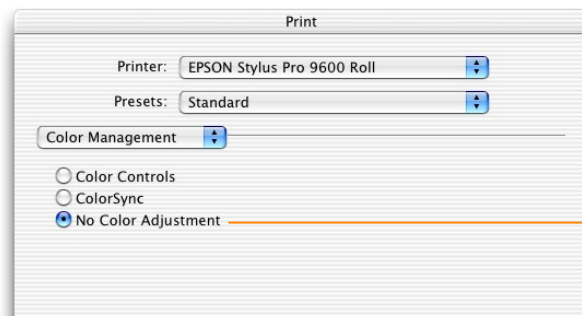
High Speed = Off

You must make sure the printer driver settings match exactly the way the RGB ICC profile is expecting them to be set. You must find out how your particular ICC profile was created and set your printer driver settings to match. Also, be sure you are using the correct printer model, ink, and media the profile was made for.



On the SP7600 and SP9600 UltraChrome models, make sure you know which Black Ink Mode you are in – Photo Black or Matte Black?

Next, pull down the driver features menu and select ‘Color Management’. The following dialog box appears.

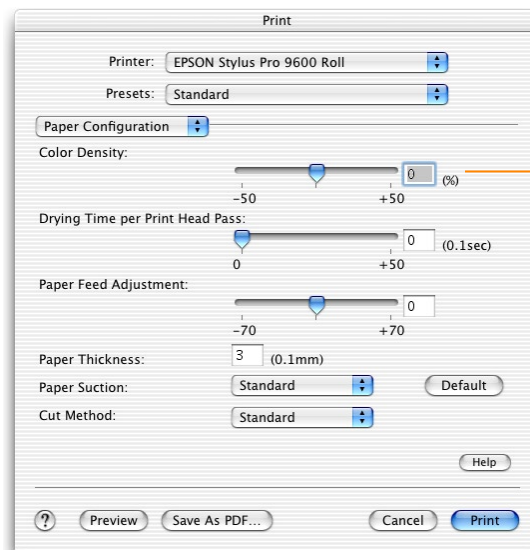


Since you are using Photoshop to manage all your color, you need to turn-off color management within the Epson driver.

### STEP 6: Choosing Your Printer Driver Settings & Printing Your Image

Next, pull down the driver features menu and select 'Paper Configuration'.

The following dialog box appears.

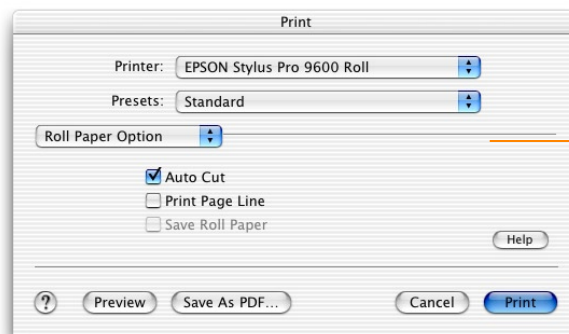


Make sure to verify this setting. Sometimes the Color Density is adjusted for the creation of an RGB profile to optimize D-max and color gamut.

Again, make sure you are selecting the correct settings for your ICC profile.

Depending upon your media input type, you may have a 'Roll Paper Option' selection. If so, pull down the driver features menu and select 'Roll Paper Option'.

The following dialog box appears.



Whatever settings you make here, will always override what you have set on the front control panel of the printer.

When you are all done making driver settings, then click on the 'Print' button.



If you make a preset of these settings BEFORE you hit the 'Print' button, you can speed-up this process the next time you use this profile, printer, ink, and media combination, by simply selecting the preset within the 'Presets:' pull down menu.

## TIPS and Troubleshooting

### **TIP 1: Run 'Repair Disk Permissions'**

Within the Apple Disk Utility, under the 'First Aid' tab, you have a choice to verify and repair your disk permissions. We have found that by repairing your disk permissions about once per month, you should run into less errors. This has been known to fix the 'Command Error' notice that sometimes shows-up on the front control panel of the SP7600 or SP9600.

### **TIP 2: Turn-off 'AppleTalk' within the Epson Ethernet Card**

If you get communication errors when printing via the network through an Epson internal Ethernet card, verify your using that latest card (part number should be: C12C823912) and turn-off the AppleTalk protocol via a web browser. (See your Ethernet card documentation for details)

As I've explained in this document, Mac OS X users should be configuring their Ethernet connections via TCP/IP not AppleTalk. AppleTalk is a 'dead' protocol. By turn-off AppleTalk within the Epson Ethernet card, your communication errors should stop.

### **TIP 3: Do not use older 'Presets' after installing an updated driver**

When re-installing or updating your Epson printer driver, the older presets that you've defined against the older driver may cause 'Command Errors' on the front LCD panel of the SP7600 or SP9600. Simply delete the older presets and redefined them through the newer driver.

### **TIP 4: Why are my ICC profiles not showing-up?**

Under Mac OS X, ICC profiles do not show-up to either the OS or application software until after you've installed the printer driver.

### **TIP 5: Stopping 'Command Errors' on the SP7600 or SP9600**

The reason why a 'Command Error' shows-up on your printers LCD panel is due to incorrect driver code being sent to your printer. For example, your printer is set to Matte Black Mode, but your driver thinks it's still in Photo Black Mode. In most cases, the best way to solve this is to reinstall your driver, delete your older presets, and repair your disk permissions.

Another reason why this happens is due to media input types being incorrect. For example, you have cut sheet media being used, but you selected a roll based driver from within the Print Center Utility. Make sure your media type matches your driver.

This document comes with no technical support of any kind and can be distributed freely among Epson customers for their use.

Specifications and terms are subject to change without notice. EPSON, EPSON Stylus and Micro Piezo are registered trademarks of Seiko Epson Corporation. UltraChrome, EPSON Archival, EPSON Photographic Dye, ColorLife, and DX3 are trademarks, and EPSON Preferred Protection Plan is a service mark of Epson America, Inc. All other product brand names are trademarks and/or registered trademarks of their respective companies. EPSON disclaims any and all rights in these trademarks. © Epson America, Inc. 2003.